

Macroinvertebrate Match!

What is an **aquatic macroinvertebrate**?

Aquatic lives in water

Macro large enough to see with the naked eye

Invertebrate no backbone

How to Set Up

1. Print out the card pages.
2. Cut out all the cards. You should have 24 total cards (2 each of 12 macroinvertebrates)

How to Play

1. Place all the cards face down on the table and mix them up.
2. The first player turns over any two cards.
3. If the cards match, they can take those two cards for their own stack and go again. If not, they will turn the cards back over and the next player will try!
4. Play until all the cards are gone!

PLAYING CARDS ARE ON THE FOLLOWING PAGES!

ENJOY!



MAYFLY



MAYFLY



DRAGONFLY



DRAGONFLY



CRAYFISH



CRAYFISH



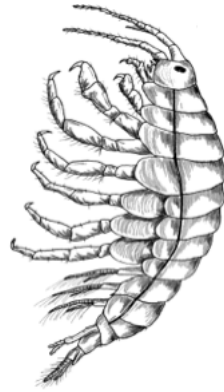
FLATWORM



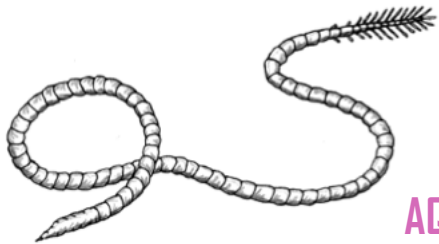
FLATWORM



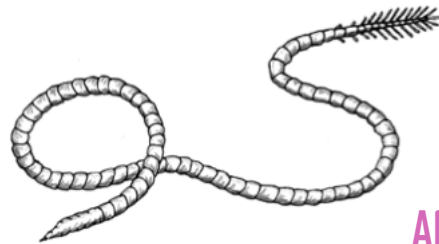
SCUD



SCUD



AQUATIC WORM



AQUATIC WORM



LEECH



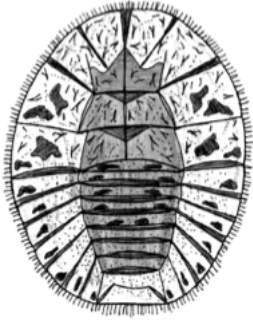
LEECH



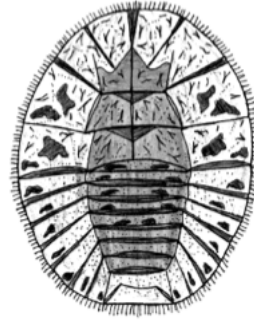
CRANE FLY



CRANE FLY



WATER PENNY



WATER PENNY



RIFFLE BEETLE



RIFFLE BEETLE



BLACK FLY



BLACK FLY



CADDISFLIES



CADDISFLIES

