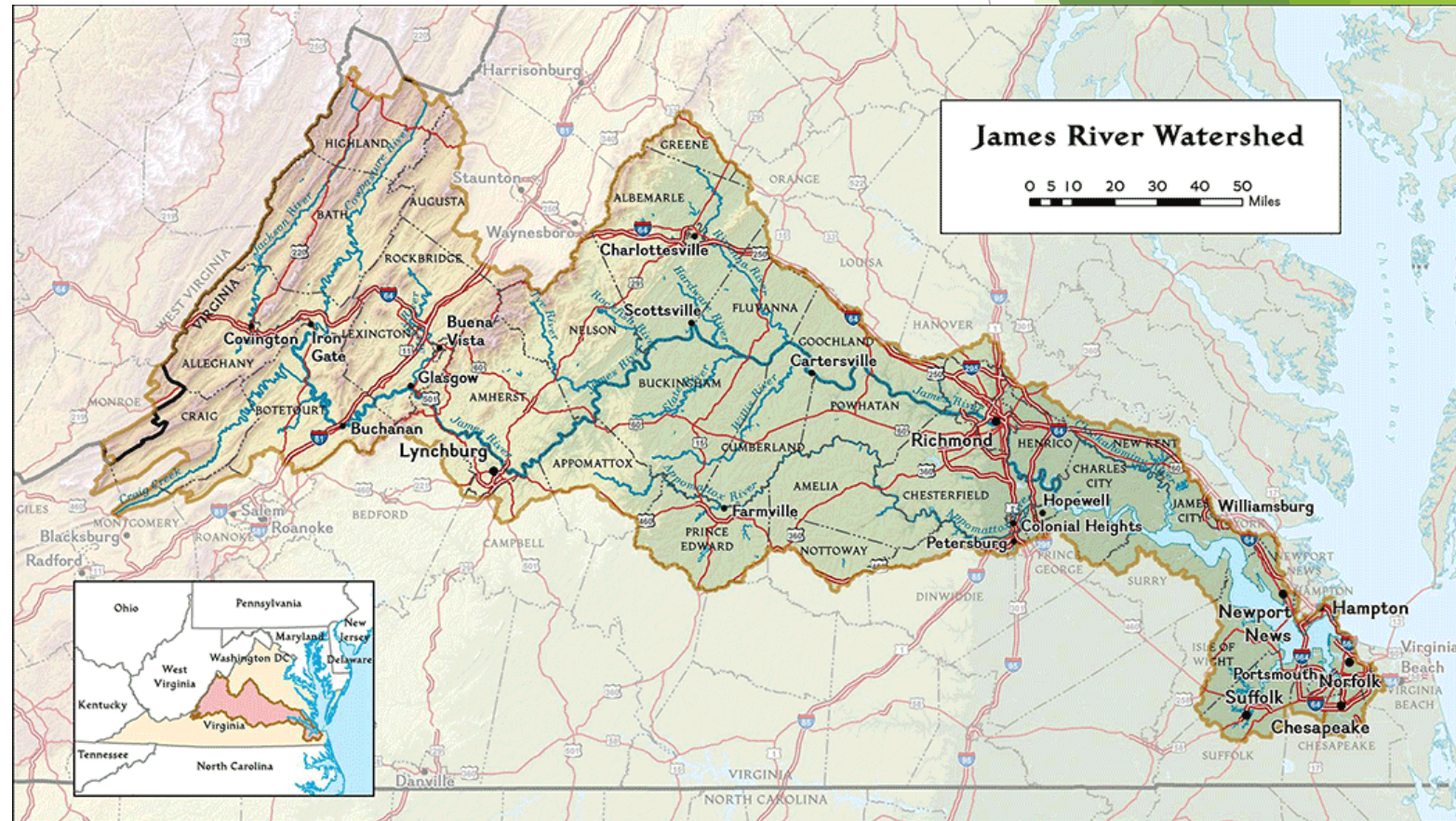


Living Shoreline Cost-share Program



Who we are

- ▶ The entire watershed!
- ▶ Created following the Kepone spill in 1976
- ▶ From the mountains to the Bay



Living shorelines

- ▶ Grant from the Virginia Environmental Endowment along with the Elizabeth River Project
 - ▶ ERP closely mentored JRA staff
- ▶ Pay for 75% of the installation and construction materials



Site visits

- ▶ DCR-Shoreline Erosion Advisory Service engineer provides free technical advice to homeowners
- ▶ Educate homeowners on cause of erosion
- ▶ Give them options



Design and permitting

- ▶ Provide designs free of charge
- ▶ Act as permitting agent
- ▶ Conduct site visits with regulators
- ▶ Attend local Wetland Board Meeting, if required

Installation

- ▶ Interviewed and vetted ten marine contracting firms
- ▶ Maintenance for three years

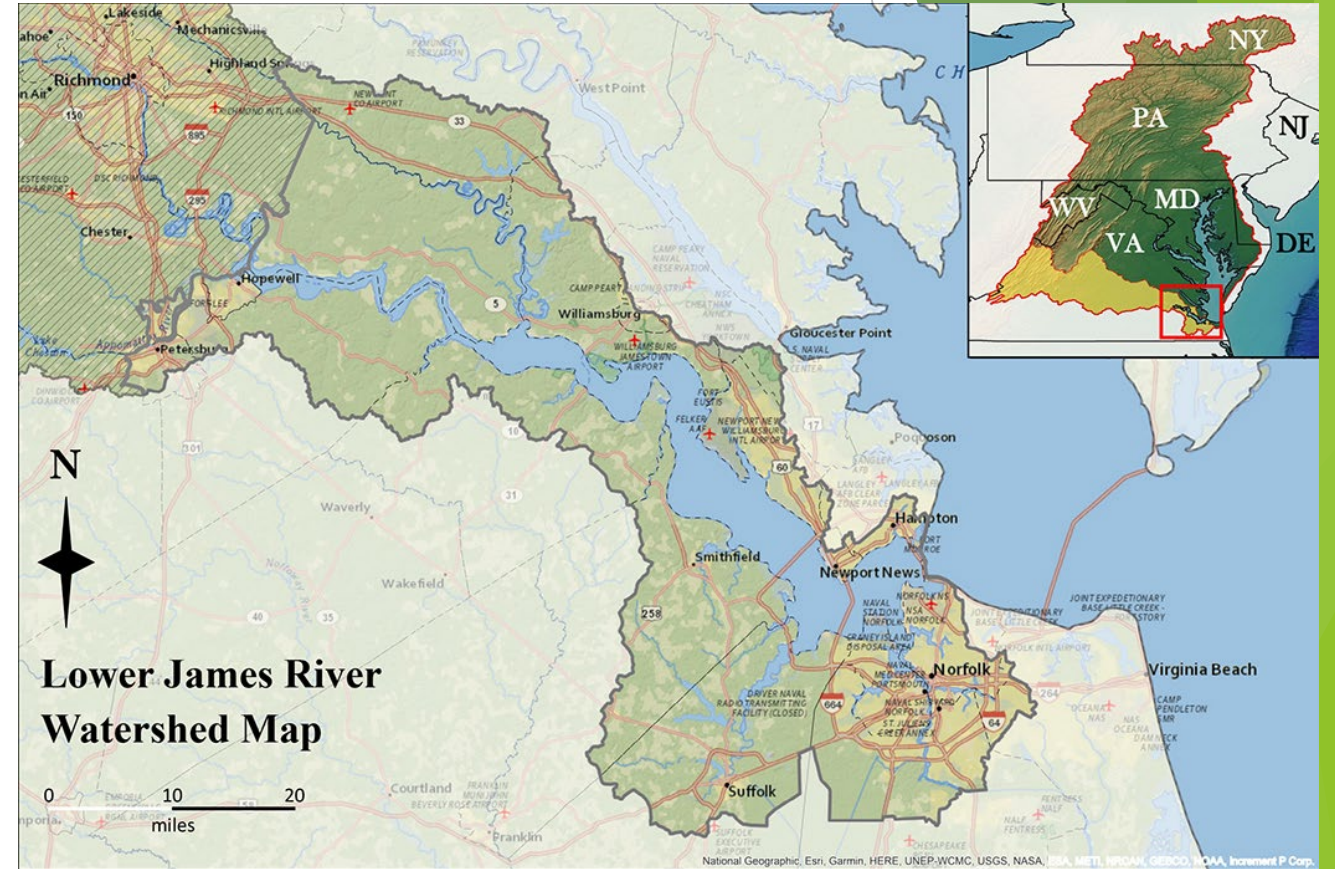


Monitoring

- ▶ Projects will be inspected by “Marsh Stewards” at least on an annual basis
- ▶ Examine all aspects of the living shoreline
- ▶ Maintenance will be covered by grant funding for three years

Project area

- ▶ Tidal lower James River watershed
- ▶ Excluding the Elizabeth River Watershed



Questions?

