

Seagrass Survivor Worksheet

1. Record the juvenile crab size, predator species, seagrass abundance, and outcome for each predation event.

| Crab Size | Predator Species | Seagrass Abundance | Outcome |
|-----------|------------------|--------------------|---------|
| | | | |
| | | | |
| | | | |
| | | | |
| | | | |
| | | | |
| | | | |
| | | | |
| | | | |
| | | | |

2. Identify the independent and dependent variables in this experiment.

Independent variable(s):

Dependent variable:

3. How many juvenile blue crabs survived that were:

Small? _____

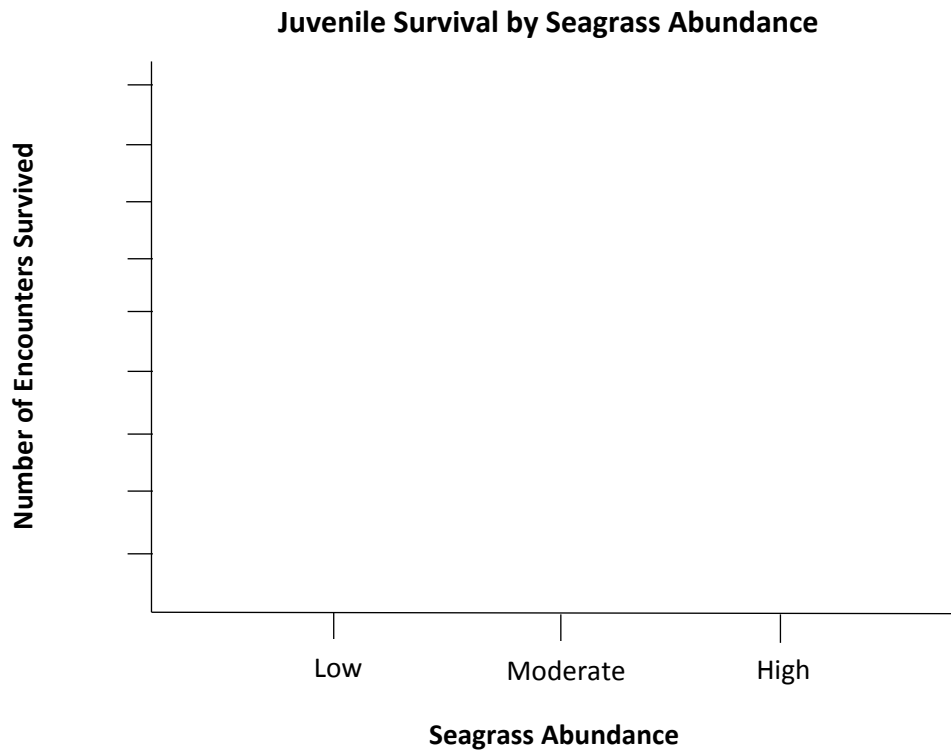
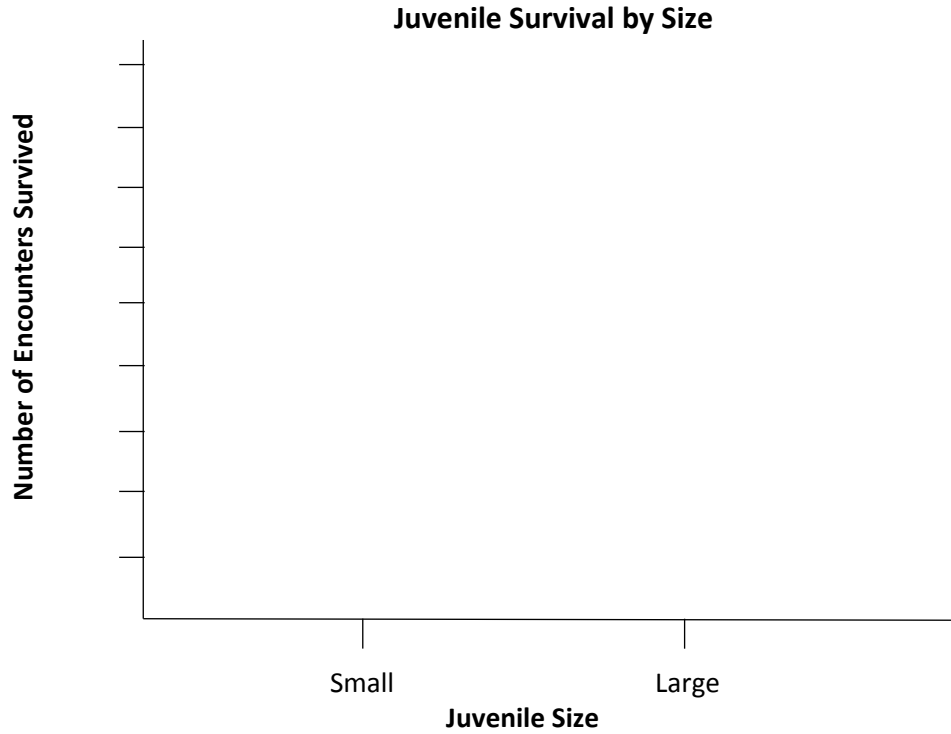
Large? _____

In low seagrass abundance? _____

In moderate seagrass abundance? _____

In high seagrass abundance? _____

3. Using your answers to the previous questions, make bar graphs to show how often small and large juvenile survived, and how often juveniles survived in low, moderate, and high seagrass abundance.



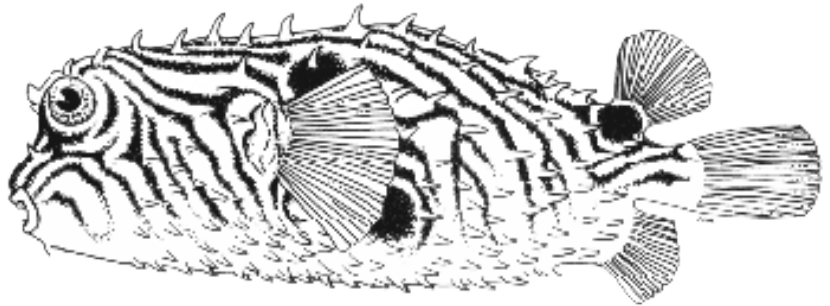
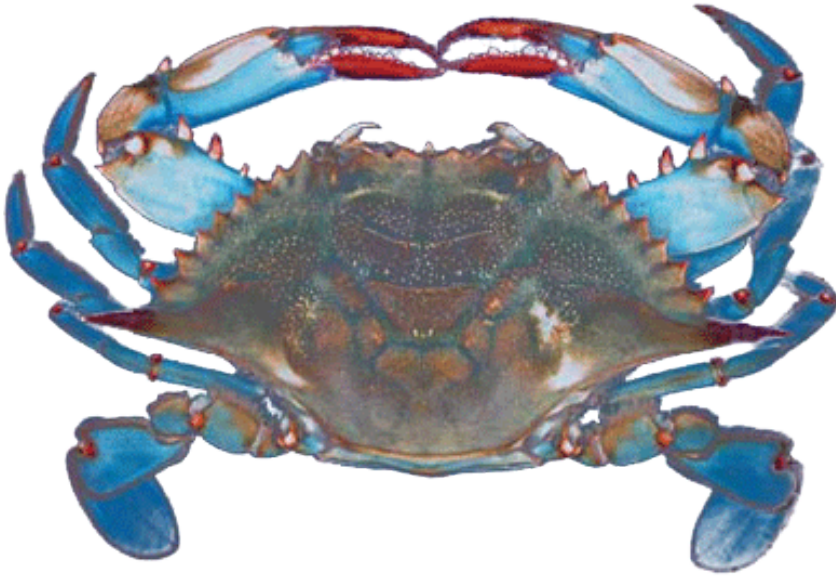
4. Do smaller or larger juvenile blue crabs survive better? How do you know?
Why do you think that is?

5. Do juvenile blue crabs survive better in low, moderate, or high seagrass abundance? How do you know? Why might this be?

6. Seagrass is disappearing from Chesapeake Bay due to warming water temperatures. How do you think the loss of seagrass will affect the blue crab population in the Bay?

Seagrass Survivor Data Table

| Crab Size | Predator | Seagrass Abundance | Outcome |
|-----------|----------|--------------------|---------|
| | | | |
| | | | |
| | | | |
| | | | |
| | | | |
| | | | |
| | | | |
| | | | |
| | | | |
| | | | |
| | | | |
| | | | |
| | | | |
| | | | |
| | | | |
| | | | |
| | | | |
| | | | |
| | | | |
| | | | |
| | | | |
| | | | |
| | | | |



START

1 2 3 4 5 6 7

8 9 10 11 12

13 14 15 16 17 18

19 20 21 22 23 24

25 26 27 28 29 30

31 32 33 34 35 36

